

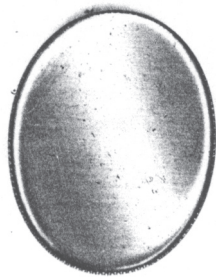
# Milled Edge Settings

## Oval Contd:

These raw brass cups for use with flat back stones.



33X26 OV



34X26 OV



40X30 OV  
1R, PE 2R

## Pear: (CMP)



8X5 PR



10X6 PR



10x7 PR



13X8 PR



14x10 PR



18X13 PR  
PE ONLY

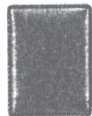
## Rectangle: (CMR)



9X7  
RCT



10x8  
RCT  
PE



14X10  
RCT



16X12  
RCT  
NR,1R

## Octagon: (CO)



18X13 OCT

## Navette: (CMN)



6X3 NAV  
PE



8X4 NAV



10X5 NAV  
NR  
1R PE ONLY  
2R PE ONLY



15X7 NAV  
NR PE ME  
1R PE ONLY  
2R PE ONLY



15X7 NAV  
2R RE ONLY

## Square: (CMS)



6x6 SQ  
PE



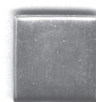
7X7 SQ  
PE



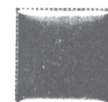
8X8 SQ  
PE



10X10 SQ



11X11 SQ  
PE



12X12 SQ

**Note:** CB = Closed Back, OB = Open Back, SB = Shaped Back, PB = Pointy Back,  
 FB = Flat Back, RV = Rivet Back, RL = Rivoli, BB = Button Back,  
 SO = Sew On, CC = Corner Claw, PE = Plain Edge, RE = Rolled Edge  
 D = Deep Cup, NR = No Ring, 1R = 1 Ring, 2R = 2 Ring, 3R = 3 Ring,  
 4R = 4 Ring

